



Expression of Interest

Newcastle Steelworkers Memorial

Memorial Design Project Brief

Background

From 1915 to 1999 Newcastle was home to Australia's major steelmaking operations. Australia's first integrated steelworks was built on Hunter River mud-flats by Broken Hill Proprietary Co Ltd in 1915. At its peak the steelworks and associated steel manufacturing subsidiaries employed well over 15,000 direct and indirect workers. During the 84 years of operations an unknown large number of workers died from work injuries.

There is no memorial dedicated to these workers.

Newcastle Industrial Heritage Association Inc., a local community group, has initiated a project to construct a specific memorial to lives lost in the steel industry, on land in the vicinity of the steelworks site.

A public fund-raising project is in progress with a target of \$60,000 to construct a large artistic memorial.



Newcastle Steelworkers Memorial

Expression of Interest

Introduction

Applications are invited from artists to register interest for the design, development and installation of a memorial to steelworkers who lost their lives in the steelmaking industry in Newcastle from 1915 to 1999. The memorial will be located in parkland in the vicinity of the steelworks site. The location will be determined prior to offering of commission, and requirements for development approval incorporated into contract.

The project has been initiated by Newcastle Industrial Heritage Association, who will coordinate an independent memorial committee to oversee the project till completion.

Project Timeline

- The first stage is a call for Expressions of Interest including a concept design. This process commences on 2 June 2011, and Expressions of Interest close on Friday 16 September at 4pm.
- Four submissions will be offered a fee of \$1,000 to submit a fully detailed design and costing, including a scale maquette by Friday 27 January 2012.
- The chosen design will be announced on Monday 27 February 2012.
- The work shall be completed within one year from signing contract.

Budget

The successful artist will be offered a commission for a fee of \$60,000 (incl GST) to complete the work including design, approvals, construction, and installation.

Design Criteria

The following criteria must be considered in the Design of the 'Newcastle Steelworkers Memorial'.

Concept

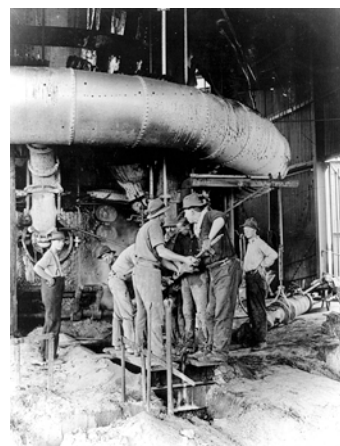
The concept of the memorial is for a unique artwork with clear symbolic statement relating to lives lost in the steel industry.

Dimensions

It is intended that the work shall be of a scale that signifies the large size of the steelmaking operation. The location is outdoors in open parkland, with no dimensional limitations. It is expected that the work should be visible from a distance of 100metres.

Materials of Construction

The memorial shall be constructed substantially from steel.



Any material may be included but must be in keeping with an industrial theme, and be low maintenance.

Public Safety

The design must consider Australian Standards for public safety and all OH&S issues.

Historical Details

An extensive database of steelworks photographs can be found on Google or at following web locations.

<http://collections.ncc.nsw.gov.au/keemu/pages/nrm/index.htm>

<http://www.niha.org.au/>

Design Selection Procedure

An independent panel of six Novocastrians will assess all submissions and select four to proceed to submit detailed design.

Submissions

Expressions of Interest must include a concept design of the proposed work. This should include sketches or drawings, as well as a written description of the concept and its interpretation.

Applicants are required to provide CV of Qualifications, exhibitions and prizes won, with photos of previous major works. At least three referees should be provided.

Applications should be in hard copies and also in digital format.

Commissioning

Following public exhibition of short-listed detailed submissions, the selected work will be commissioned in accordance with agreed terms and conditions.

Payment

A schedule of progress payments will be agreed in accordance with stages of manufacture.

Contacts

All Expressions of Interest must arrive at address below by 4pm on Friday 16 September 2011.

Newcastle Steelworkers Memorial Committee
C/- 136 Tyrrell St,
NEWCASTLE
2300

All enquiries to: Bob Cook President
Newcastle Industrial Heritage Association Inc.
Email niha@pacific.net.au
0249261117 or 0419241731

